



VRV IV S-series

Keep looking
you'll never find me



Compact VRV IV heat pumps
for residential and light commercial applications

Why choose Daikin VRV IV S-series?

You can install highly efficient, reliable Daikin air conditioning VRV systems in the most restricted locations because these outdoor units are invisible from street level.



Keep looking,
you'll never find me

Daikin VRV IV S-series offers you the most compact VRV air conditioning solution ever. It's ideal for environments where space is limited, has no visual impact and is quiet, so it is easy to comply with building regulations.

Compact

- ✓ Unique VRV outdoor solution
- ✓ Compact units with a small footprint integrate seamlessly into surrounding architecture
- ✓ Total flexibility for any location or type of property due to the unlimited possibilities of our of solutions
- ✓ Ideal for built-up areas where outdoor space is limited as the unit is easy to hide
- ✓ Outdoor air conditioning units can now be fitted where this was previously not an option
- ✓ Easy to comply with planning regulations, the best solution for urban locations such as homes, banks, shops or almost any other application you can think of

Daikin VRV efficiency, comfort and control

- ✓ Highest seasonal efficiency rating in their class (ESEER), reducing energy, costs and CO₂ emissions
- ✓ Unique Variable Refrigerant Temperature eliminates cold draughts and continuously adjusts unit operation to the actual conditions, maximising seasonal efficiency
- ✓ Centralised, easy to use controls ensure optimum operation, maximising efficiency and comfort
- ✓ Energy monitoring to follow up energy use and compare different properties (for commercial properties)

Quiet

- ✓ Highly suited to densely populated areas such as city centres thanks to their low operating sound
- ✓ Low noise modes reduce sound further to comply with inner-city noise regulations

Leading after-sales support

- ✓ Support wherever you need it, from the widest network of highly trained professionals
- ✓ Professional selection tools and excellent expert support reduce installation time, ensuring optimum operation and lower running costs
- ✓ A single point of contact, even for multiple properties in multiple countries

Flexible installation

- ✓ Lightweight units reduce installation time and effort
- ✓ Compact units extend the installation options



VRV IV S-series

Keep a low profile

VRV IV S-series units are an ideal solution when outdoor space is restricted because they are easy to hide, thus minimising both visual and sound impact. Their design overcomes the challenges that aesthetics and regulations can impose.

Space saving

The lowest unit in the market

The VRV IV S-series compact units fit easily behind low walls because they are the lowest on the market with a height of less than 1m, including the supporting legs.

Seasonal efficiency

The VRV IV S-series units have the best seasonal efficiency in the class, reducing both energy consumption and costs.



Subtle

The Daikin VRV IV S-series units are ideal for installation on a balcony or behind a parapet as they are front blow units which eliminates the need for any ducting saving on installation costs.



https://www.daikin.eu/en_us/product-group/vrv/vrv-iv-s-series.html

Daikin VRV IV S-series compact units can be installed in a wide variety of locations and applications such as behind a parapet, yet remain entirely invisible from street level thanks to their compact dimensions.

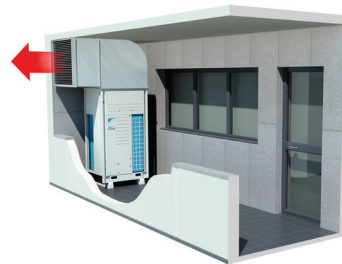


Ideal for balcony installation

The ideal choice for a balcony installation because the Daikin VRV IV S-series units are front blow units. The air is blown away from the balcony, minimising any turbulence or obviating the need for ducts and ensuring optimum operation.

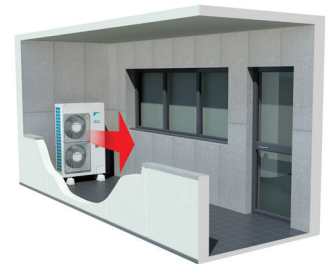
On top of that the small footprint makes it the natural choice for the typically limited space available on balconies.

Standard VRV IV (top blow)

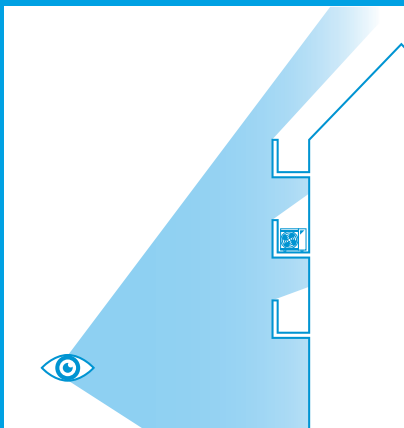


versus

VRV IV S-series







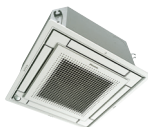
Daikin VRV IV S-series units can be installed discreetly on a balcony thanks to their compact dimensions, offering you air conditioning while being almost unnoticeable.



Total solution



Daikin Emura
wall mounted unit



Fully flat cassette



Nexura



Biddle air curtain



Intelligent Touch Manager



Air handling unit ventilation

Our range of small-footprint units



4-5HP
(single phase)



4-5-6HP
(single and three phase)

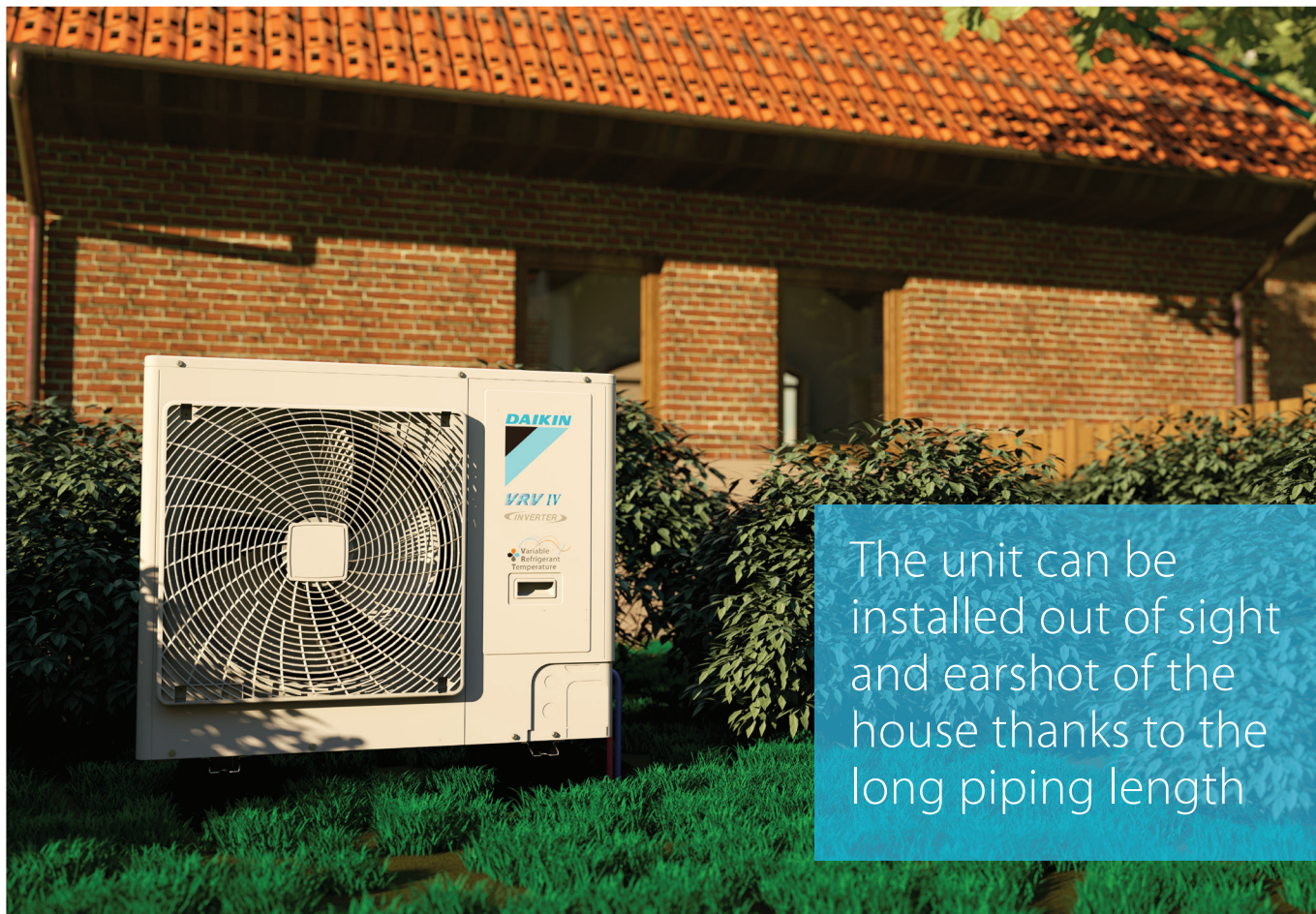


8-10-12HP
(three phase)

A wide range, big on features

They may be discreet, but Daikin VRV IV S-series units stand out when it comes to benefits they deliver. They provide the perfect indoor climate, while remaining totally discreet from the outside. If you need efficient and effective air conditioning from a completely unnoticeable unit, look no further.

- ✓ A wide range of stylish residential and commercial indoor units can be connected
- ✓ A total air conditioning solution integrating air handling units and/or air curtains
- ✓ Complete reliability thanks to refrigerant-cooled PCB
- ✓ Suitable for bigger projects of up to 150 to 200 m²
- ✓ Light weight unit (down to 94kg) is easy to install and handle
- ✓ A perfect match for any application thanks to the wide range of small-footprint units



The unit can be installed out of sight and earshot of the house thanks to the long piping length.

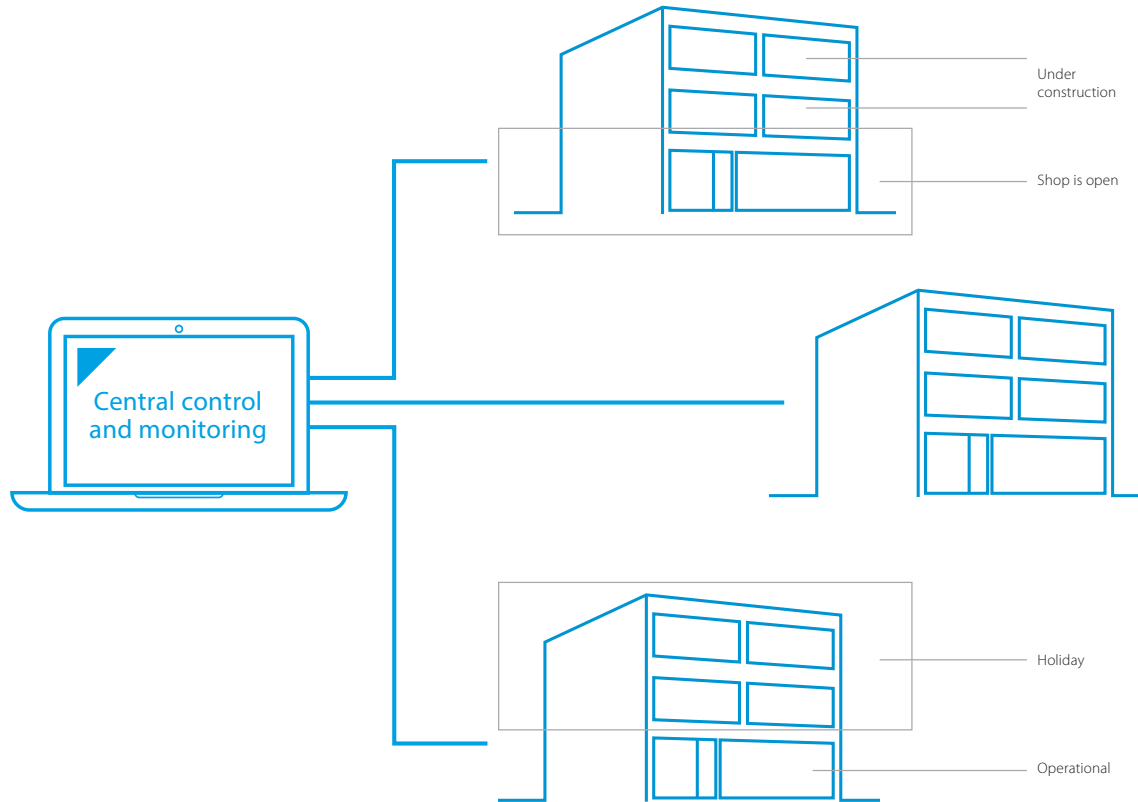




A true VRV IV

- ✓ Unique Variable Refrigerant Temperature for maximum customised comfort, efficiency and intelligent control tailored to your individual needs
- ✓ Control individual areas of your property for maximum efficiency
- ✓ Zone by zone installation tailored to the needs of the building
- ✓ Multiple systems can be configured and controlled consistently from a central location
- ✓ VRV configurator for quick and easy commissioning of one or multiple systems

Zone by zone installation



Control of individual areas



Ceiling suspended unit: Unique Daikin unit for high rooms with no false ceilings nor free floor space



Round flow cassette:
360° air discharge for optimum efficiency and comfort



Daikin Emura:

A unique design unit for rooms with no false ceilings, nor free floor space



Fully flat cassette:
Unique design that integrates
fully flat into the ceiling



Concealed floor standing unit:
Fully concealed in the wall



Specifications

Outdoor unit				RXYSQ	4TV1	5TV1
Capacity range				HP	4	5
Cooling capacity	Nom.	35°CDB		kW	12.1	14.0
Heating capacity	Nom.	6°CWB		kW	12.1	14.0
	Max.	6°CWB		kW	14.2	16.0
Power input - 50Hz	Cooling	Nom.	35°CDB	kW	3.43	4.26
	Heating	Nom.	6°CWB	kW	3.18	3.19
		Max.	6°CWB	kW	4.14	5.00
EER at nom. capacity	35°CDB			kW/kW	3.53	3.29
COP at nom. capacity	6°CWB			kW/kW	3.81	3.58
COP at max. capacity	6°CWB			kW/kW	3.43	3.20
ESEER - Automatic					6.93	6.57
Maximum number of connectable indoor units					64	
Indoor index connection	Min.				50	62.5
	Nom.				-	
	Max.				130	162.5
Dimensions	Unit	HeightxWidthxDepth		mm	823x940x460	
Weight	Unit			kg	94	
Fan	Air flow rate	Cooling	Nom.	m ³ /min	91	
Sound power level	Cooling	Nom.		dBA	68	69
Sound pressure level	Cooling	Nom.		dBA	51	52
Operation range	Cooling	Min.~Max.		°CDB	-5~46	
	Heating	Min.~Max.		°CWB	-20~15.5	
Refrigerant	Type				R-410A	
	GWP				2,087.5	
	Charge			TCO ₂ eq	7.7	
Piping connections	Liquid	OD		mm	9.52	
	Gas	OD		mm	15.9	
Power supply	Phase/Frequency/Voltage			Hz/V	1~/50/220-240	
Current - 50Hz	Maximum fuse amps (MFA)			A	32	

Actual number of units depends on the indoor unit type (VRV DX indoor, RA DX indoor, etc.) and the connection ratio restriction for the system (being; 50% ≤ CR ≤ 130%).

The automatic ESEER value corresponds with normal VRV IV-S heat pump operation, including the advanced energy saving functionality (variable refrigerant temperature control).

From 01/01/2018 LOT21 data will be available.

Specifications

Outdoor unit				RXYSQ	4T8V	5T8V	6T8V	4T8Y	5T8Y	6T8Y	8TY1	10TY1	12TY1
Capacity range				HP	4	5	6	4	5	6	8	10	12
Heating capacity	Nom.	6°CWB		kW	12.1	14.0	15.5	12.1	14.0	15.5	22.4	28.0	33.5
	Max.	6°CWB		kW	14.2	16.0	18.0	14.2	16.0	18.0	25.0	31.5	37.5
Power input - 50Hz Heating	Nom.	6°CWB	kW	2.68	3.27	3.97	2.68	3.27	3.97	5.20	6.60	8.19	
	Max.	6°CWB	kW	3.43	4.09	5.25	3.43	4.09	5.25	6.22	8.33	10.2	
COP at nom. capacity 6°CWB				kW/kW	4.52	4.28	3.90	4.52	4.28	3.90	4.31	4.24	4.09
COP at max. capacity 6°CWB				kW/kW	4.14	3.91	3.43	4.14	3.91	3.43	4.02	3.78	3.66
ESEER - Automatic					7.89	7.49	6.73	7.89	7.49	6.73	6.72	6.41	6.18
Maximum number of connectable indoor units					64 (1)								
Indoor index connection	Min.				50	62.5	70	50	62.5	70	100	125	150
	Nom.				-								
	Max.				130	162.5	182	130	162.5	182	260	325	390
Dimensions	Unit	HeightxWidthxDepth		mm	1,345x900x320						1,430x940x320	1,615x940x460	
Weight	Unit				104						144	175	180
Fan	Air flow rate	Cooling	Nom.	m³/min	106						140	182	
Sound power level	Cooling	Nom.		dBA	68	69	70	68	69	70	73	74	76
Sound pressure level	Cooling	Nom.		dBA	50	51		50	51		55		57
Operation range	Cooling	Min.~Max.		°CDB	-5~46						-5~52		
	Heating	Min.~Max.		°CWB	-20~15.5								
Refrigerant	Type				R-410A								
	GWP				2,087.5								
	Charge	TCO ₂ eq			7.5						9.4	14.6	16.7
					3.6						5.5	7	8
Piping connections	Liquid	OD		mm	9.52								12.7
	Gas	OD		mm	15.9		19.1	15.9		19.1		22.2	25.4
	Total piping length		System	Actual	m		300				-		
Power supply	Phase/Frequency/Voltage			Hz/V	1N~/50/220-240				3N~/50/380-415				
Current - 50Hz	Maximum fuse amps (MFA)			A	32			16			25		32

(1) Actual number of units depends on the indoor unit type (VRV DX indoor, RA DX indoor, etc.) and the connection ratio restriction for the system (being; 50% ≤ CR ≤ 130%). | The automatic ESEER value corresponds with normal VRV IV-S heat pump operation, including the advanced energy saving functionality (variable refrigerant temperature control). | From 01/01/2018 LOT21 data will be available





Daikin Europe N.V. Naamloze Vennootschap Zandvoordestraat 300 · 8400 Oostende · Belgium · www.daikin.eu · BE 0412 120 336 · RPR Oostende (Responsible Editor)



ECPEN18-208

10/17



Daikin Europe N.V. participates in the Eurovent Certified Performance programme for Liquid Chilling Packages and Hydronic Heat Pumps, Fan Coil Units and Variable Refrigerant Flow systems. Check ongoing validity of certificate: www.eurovent-certification.com

The present publication is drawn up by way of information only and does not constitute an offer binding upon Daikin Europe N.V. Daikin Europe N.V. has compiled the content of this publication to the best of its knowledge. No express or implied warranty is given for the completeness, accuracy, reliability or fitness for particular purpose of its content and the products and services presented therein. Specifications are subject to change without prior notice. Daikin Europe N.V. explicitly rejects any liability for any direct or indirect damage, in the broadest sense, arising from or related to the use and/or interpretation of this publication. All content is copyrighted by Daikin Europe N.V.

The present publication supersedes ECPEN16-208. Printed on non-chlorinated paper